

Technical Update

Issue Number: **TU 455**
Author: **J. Sidaway**
Page: **1 of 3**
Issue Date: **28 / 02 / 11**
Valid Period: **N / A**

Product Description:	E SERIES WIDESCREEN
Product Code(s):	E62220 / E62223 / E62226
Effective Start Date:	ALL
Subject:	TOUCH SCREEN LINEARISATION UTILITY

On the occasion that it is necessary to replace the LCD module and/or the RETS PCB within an E Series Widescreen display unit, the calibration between the LCD module and RETS PCB will be unsynchronised. Every LCD module manufactured has the touch screen aspect the LCD calibrated at end-of-line by way of installed with a 100-digit number; this number needs to be programmed into the ePROM of the RETS PCB in order to provide touch screen accuracy.

Additionally, following the programming of the 100-digit number using the linearization utility, it is still recommended to perform the touch screen linearization through the Display Setup menu option of the E Series Widescreen display unit. As aforementioned the 100-digit number located on the reverse of the LCD module is programmed into the E Series Widescreen display unit via a unique linearization utility in which creates a file that can be copied onto an empty CompactFlash™ media card then inserted into the display unit.

WARRANTY ALLOWANCE:

YES

NO

MAXIMUM WARRANTY LABOUR TIME:

maximum labour allowance to complete modification / repair...

minutes

Please follow the Raymarine warranty claim process for additional labour, travel and mileage

DISTRIBUTION LIST:

- RAYMARINE & SUBSIDIARY
- DISTRIBUTOR & SERVICE DEALER
- INSTALLING DEALER
- BOATBUILDER / OEM
- KEY STOCKIST / RETAILER

- Add to Raymarine website – Dealer Area
- Generate FAQ – Raymarine website – Public Area

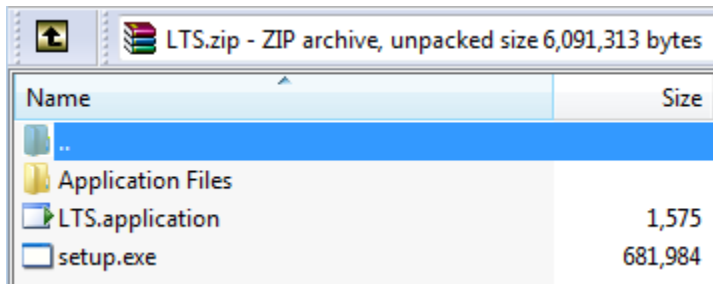
INFIELD ACTIONS:

- ACTION AT NEXT ROUTINE SERVICE

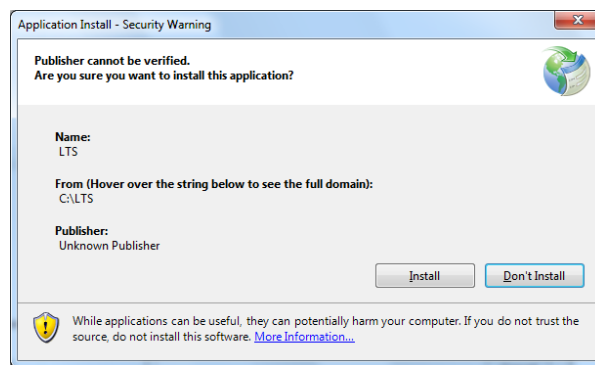
- HOLD STOCK
- REWORK STOCK
- RECALL STOCK
- RECALL CUSTOMER PRODUCT

E Series Widescreen Touch screen Linearization Utility: **INSTRUCTIONS FOR USE**

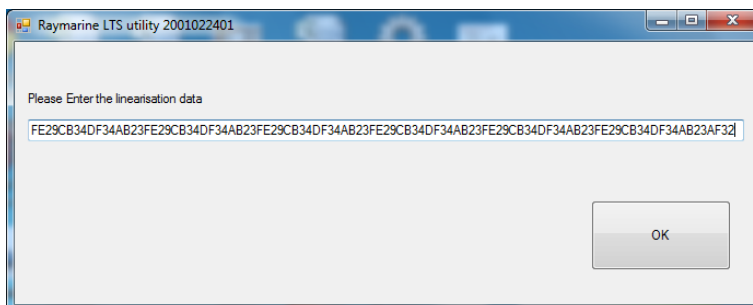
- (1) Download the **LTS.zip** file from www.raymarine.com/dealer and extract all contents of the file to a folder on your computer:



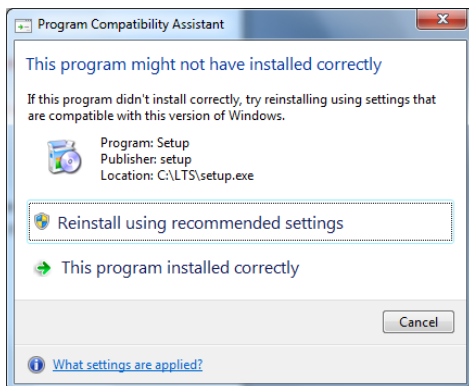
- (2) Locate the **setup.exe** file and double-click to run the installation of the linearization utility and select **Install**



The program will run automatically after installation and the following dialogue will appear, enter the 100-digit code from the barcode label of the LCD module and click on **OK**



PLEASE NOTE FOR WINDOWS 7 USERS:



Double-clicking the **setup.exe** file, the installation file will show the **Program Compatibility Assistant** warning, select **This program installed correctly** and the Raymarine LTS utility will start...

