

User guide

F251m terminal

Fixed Cellular Terminal for
Small office Home office
(SoHo) applications



User guide

F251m terminal

Fixed Cellular Terminal for
Small office Home office
(SoHo) applications

Content

F251m	7	USING CLI DISPLAYS.....	18
SUPPLIED PARTS.....	7	USING FAX MACHINES	19
EXTERNAL CONNECTORS AND LIGHT INDICATORS.....	8	Sending a fax	19
SIM CARD	8	Receiving a fax.....	19
CONNECTIONS	9	USING PCs	20
Installing the FCT as a telephone line.....	9	GPRS data access type.....	20
Installing an FCT connected to a PBX.....	10	GSM data access type	21
Preparing your FCT.....	11	USING PBX	23
Installing the FCT on the wall.....	13	ADVANCED FEATURES	24
Connecting fixed line devices.....	15	Changing volume.....	24
USING TELEPHONES.....	17	Diverting calls (call forward).....	24
		Restricting calls (call barring).....	26
		More than one call (call wait, call hold, call transfer, multiparty call)	28

Phonebook (abbreviated dialing)	30	Antennas	42
Voice mail	31	Power supply	42
Sending tone signals.....	31	FCT Data Reference Manual	42
Controlling call time (minute minder).....	31		
Emergency number (hot line).....	31	ANNEX: PC DATA CONFIGURATIONS.....	43
Two voice lines (alternate line service)	32	Windows 98 GPRS set-up.....	43
SIM card security	33	Windows NT GPRS set-up	46
TROUBLESHOOTING AND FCT INDICATORS	35	SAFE AND EFFICIENT USE	51
Light indicators.....	35	Product care	51
Audible tones.....	38	Antenna care	51
		Radio frequency energy.....	52
FCT TECHNICAL DATA	39	Electronic devices.....	52
		Potentially explosive atmospheres	52
FCT ACCESSORIES	41	Power supply	53
ISDN Adapter FI12	41	Children	53
Display Adapter DA20.....	41	Disposing of the product.....	53

Battery information.....	53	Ericsson Warranty.....	55
Disposing of the battery	54	What Ericsson will do	55
Moving or storing the FCT	54	Conditions.....	55
Accessing the battery compartment	54		
LIMITED WARRANTY	55	REGULATORY INFORMATION	57
Limited Warranty Conditions.....	55	DEFINITIONS.....	58

Ericsson F251m

First edition, November 2001

This manual has been published by Ericsson España, S.A. Bilbao Technology Centre, without any warranty. Improvements and changes to this manual needed by typographical errors, inaccuracies of current information, or improvements to programs and/or equipment, may be made by Ericsson España, S.A. at any time and without notice. Such changes will, however, be incorporated into new editions of the manual.

All rights reserved

© Ericsson España, S.A. Bilbao Technology Centre, 2001

Publication number: EN/LZT 123 6904 R1B

Important information: Some of the services described in this guide might not be supported by all networks. Please, contact your network operator for information on different network services operational in your GSM network.

F251m

The F251m is a flexible and cost-effective solution for connecting your SoHo telephone system to the digital wireless GSM network.

When there is no fixed infrastructure or if you need additional telephone lines:

- install the terminal
- run cabling from the F251m to any place within your Small office Home office (SoHo) and
- you will be ready to connect and use standard telephones, fax machines, computers (Internet) and PBXs

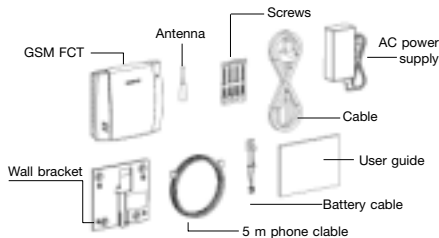
The terminal features the latest technology, which makes it perfect for everyday communication:

- Triple band GSM (E-GSM 900, GSM 1800, GSM 1900)
- Telephone line providing high quality speech (EFR), G3 fax and up to V.90 data transmission
- GPRS (General Packet Radio Service), which keeps you always on and facilitates rapid transmission of data (ideal for e-mail and Internet browsing)

- HSCSD (High Speed Circuit Switched Data), which further enhances data transmission
- Embedded modem available over the RS232 port
- Battery back-up

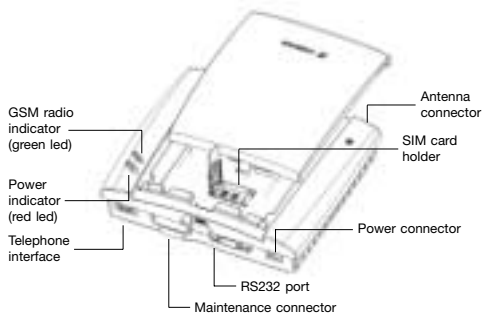
Supplied parts

After unpacking, please check that the following parts are included:



- Display Adapter DA20 (optional)
- Battery holder (optional)

External connectors and light indicators



SIM card

Your network operator provides you with a SIM (Subscriber Identity Module) card. The SIM card contains information about your telephone number and the services included in your subscription, among other things.

Warning!: the FCT has to be switched off before inserting or removing your SIM card.

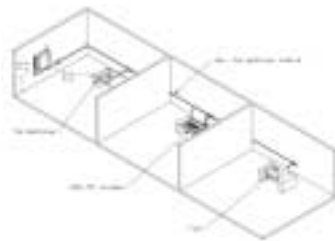
Connections

Warning!: please, before you start any connections refer to section “Safe and Efficient Use” on page 51 in this guide and contact your network operator if you have any questions.

Warning!: to get a good FCT protection against electrical discharges and the best audio quality, a good grounding of the power supply is strongly recommended.

Installing the FCT as a telephone line

The FCT is designed to provide a telephone line (RJ11 connector) to which up to 3 Fixed Line devices can be connected in parallel. The FCT provides a single telephone line, which means that only one communication can take place simultaneously, in the same way as the ordinary fixed line (you cannot, for example, receive or originate a telephone call while sending or receiving a fax).



Note: you may be able to connect up to 5 telephone devices depending on their characteristics. See “Ring Back Test” on page 16.

Warning!: in order to avoid GSM interferences (noise), place the FCT at least 3 meters (horizontal) away from electronic devices, including the telephone equipment connected to the FCT, or other household electronic devices such as televisions or radio receivers. The difference in height should be at least 2 meters (vertical). This is not necessary if you use telephone devices that fulfil the Immunity Characteristics settled by the IEC CISPR-24 standard. In this case, a minimum security distance of 20 cm is recommended.

The FCT is also equipped with an RS232 port that enables you to use it as a GSM modem for PC fax, data and SMS services. For this specific configuration, please refer to the **FCT Data Reference Manual**. See *FCT accessories* on page 41.

Installing an FCT connected to a PBX

The FCT is designed to provide a telephone line (RJ11 connector) that behaves in the same way as an analog trunk.

Generic requirements

The PBX should meet the following generic requirements for FCT connectivity:

- The PBX must provide analog trunks. Otherwise, the ISDN FI12 adapter accessory will be necessary. See *FCT accessories* on page 41).
- One position of the trunk must be assigned to each FCT terminal.
- The trunk card must support either Busy Tone Detection (BTD) or Polarity Reversal Detection on answer and release.

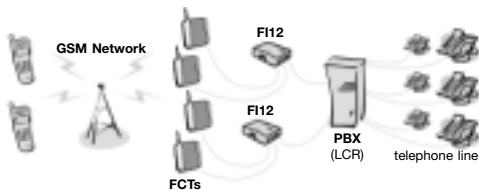
- The PBX can be programmed to utilize Least Cost Routing (LCR), if available, to automatically choose the FCT trunk when suitable.
- If the PBX does not offer LCR, choose the FCT trunk manually with a special dialed prefix.

The F251m terminal is compatible with most analog PBXs on the market and with most of the available 2B+D ISDN digital output trunks, via its accessory ISDN FI12 adapter. See *FCT accessories* on page 41.

FCT connectivity to the analogue trunk of the PBX



FCT connectivity to the ISDN 2B+D trunk of the PBX



To carry out a correct FCT installation in a PBX, please follow the FCT installation instructions (*Preparing your FCT* and *Installing the FCT on the wall*) and then refer to *Using PBX* on page 23.

Note: a minimum distance of 3 meters between the FCT and the PBX is recommended. The cable distance between the PBX and the FCT should not exceed 600 meters, and the connection cable should be at least 0,4 mm².

Warning!: if you install more than one FCT to a PBX, their antennas have to be separated by 20 cm in height or 2 meters in horizontal.

Preparing your FCT

You need to follow these steps before you install the FCT on the wall and make all definitive connections.

Warning!: the FCT should be switched off before inserting or removing your SIM card or connecting any devices to the FCT.

Assembly

1. Connect the antenna



2. Remove the front cover. Open the SIM card holder and place the SIM in the right position.



3. Close the SIM card holder and place the front cover back in the previous position.

Connect a telephone to the FCT

Connect a fixed telephone to the FCT telephone line.

Note: you will use this telephone to dial the PIN.



Switch on the FCT

Connect the power supply. The FCT switches on automatically and the green and red light indicators start flashing.

Enter PIN

Most SIM cards are protected with a PIN (Personal Identity Number), which you get from your network operator and which you need in order to access the network.

If the SIM card is not protected by a PIN code, then you do not need to enter the PIN. The FCT starts the network search automatically.

If the SIM card is protected by the PIN code, then the green and red lights will flash simultaneously.

Note: if you have the DA20 display adapter accessory (See “FCT accessories” on page 41), an “ENTER PIN” message will show on your display.

Please follow these steps to enter the PIN:

- Pick up the telephone and dial the PIN code. Press the # key on your telephone or wait until you hear a beep tone.
- If you make a mistake while entering your PIN, hang up the telephone immediately and try again.

If the PIN is correct, you will hear a beep over the telephone (positive indication tone). If it is incorrect, a deep tone will sound (error indication tone).

If the PIN is entered incorrectly three times, the SIM card will be blocked. If this happens, you can unblock it by using the PUK (Personal Unblocking Key), which you also get from your network operator. See *SIM Card Security* on page 33.

Note: *once you have entered the PIN code for the first time, you will not have to enter it again unless you change your SIM card. The FCT performs this operation automatically in case of power failure.*

Network search

After you have switched on your FCT and entered the PIN, the FCT automatically searches for a network.

Note: *if the red light is off, there is a problem with the power supply. See “Troubleshooting and FCT indicators” on page 35.*

When a network is found, the green light switches on or flashes depending on the GSM signal strength. See *“Light Indicators on page” 35.*

Note: *if the green light is off, you do not have access to the GSM network at your present location.*

Now you have prepared the FCT for wall installation. Please, follow the instructions below for complete wall installation.

Installing the FCT on the wall

FCT Location

The GSM signal strength available at the FCT location affects the performance of the unit. The stronger the GSM signal, the better the FCT performance.

Tip: test several potential locations by moving the FCT while looking at the green light . Select the location where the green light is steady, or the location with the highest amount of flashes.

Note: *moving the FCT as little as 20 cm can affect the GSM reception quality.*

Location Testing				
Number of Green Light flashes	Location status			
0	Unacceptable			
1	-	-	-	Acceptable
2	--	--	--	Good
3	---	---	---	Very good
Steady	-----			Excellent

Please consider the following recommendations:

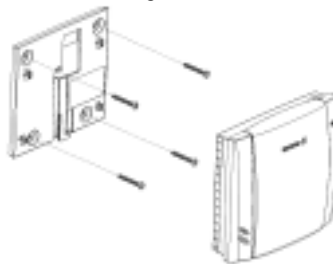
- Always select an **indoor** location, preferably close to a window and the roof. Generally, you will experience better GSM signal strength in these places.
- Do not install the FCT in a bathroom, a wet or damp basement or an outdoor location.
- Do not install the FCT on walls or rooms that contain large amounts of metal, steel or wiring.
- Do not expose the FCT to extreme temperatures (near radiators, cooling vents, etc).

If you experience poor reception quality, an outdoor antenna may result in improvement. See *FCT accessories* on page 41.

Wall mounting

Please proceed as indicated in the following picture.

- 1) Fix the wall-mounting bracket on the wall



- 2) Insert the FCT in the wall-mounting bracket



3) Shift the FCT down



Warning!: once you have fixed the FCT to the wall and switched it on, check the final status of the red and green lights. If either one is off, there is a problem with the power supply or the GSM signal. See “Troubleshooting and FCT indicators” on page 35.

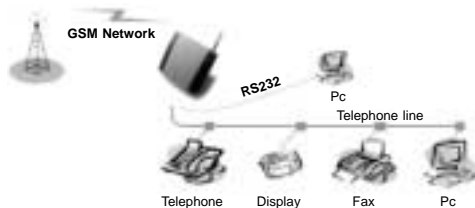
Now the FCT is ready for connecting devices and making calls.

Note: if you want to remove the FCT from the wall bracket, then you have to press the flap (step 1) as indicated in the following picture and then shift the FCT upwards (step 2).

Connecting fixed line devices

Connect the fixed line devices to the FCT (telephone line connector) with telephone wire in the same way as with an analog telephone line.

Fixed line devices are connected in parallel. You can connect the devices directly to the FCT telephone line connector (RJ11) or make an internal telephone wiring, use RJ11 splitters or similar connectors.



Note: when making the connections, the two-wire telephone cable polarity does not affect at all.

Tip: if your house or company is already wired with telephone cable, you only need to connect the cable to the FCT RJ11 connector and your telephone line will be up and running in all rooms.

Note: it is strongly recommended that the telephone wire is installed indoors in order to avoid lightning damage.

Note: the telephone wire should not exceed 600 meters. Larger distances can be achieved by using high quality telephone wire.

Checking connections

Once the fixed line devices (1 up to 3) have been connected, make the “Ring Back Test” as follows in order to check the connections:

- Lift one telephone and dial *****#10#**. You will hear a beep tone (the FCT red and green lights will start flashing - three flashes synchronized).
- Hang up the telephone and check if all the connected telephones start ringing.
- Lift any of the telephones connected and then hang it up again. The ringing will stop (the red and green lights will go to normal operation mode).

Tip: if any of the telephones has not been ringing, check your telephone cable layout and connections to make sure that all devices are properly connected.

Checking the calls quality

Use any of the telephones connected to the FCT to make a call. Check the speech quality and ask the receiver to call you back to confirm that you can also receive calls.

If you have problems, see *Troubleshooting and FCT indicators* on page 35.

Using telephones

Fixed telephones connected to the FCT telephone line work in the same way as if they were connected to a fixed network.

Warning!: *you will not be able to make or receive data or fax calls while a speech call is ongoing.*

Note: *you can also benefit from some FCT functionality that you do not usually have on your fixed network. See *Advanced features* on page 24.*

You can find detailed information about the tones that the FCT sends on *Audible tones* page 38.

Using CLI displays

Devices that display the incoming number (telephones with display, external displays, etc.) can be directly connected to the FCT line interface in the same way as an ordinary telephone. If your subscription includes the Calling Line Identification (CLI) service and the caller's network sends the number, the FCT will send the caller's number towards your CLI display.

In general, your FCT will be programmed (according to your country specifications) to send the CLI information with the right standard so that your CLI device works properly.

Refer to your CLI telephone or display user guide for further explanations on your CLI indications.

Tip: if you run the *Ring Back Test* on page 16 (lift the telephone, dial ****#10#** and hang up), you can check if the following number "1234567890" appears on your CLI display. If it does not, the FCT is not using the right standard.

If you experience that your CLI device is not showing the calling numbers, you may need to change the FCT settings.

This is done by dialing one of the following sequences, depending on the CLI standard that your CLI device supports (check its user guide).

CLI standard	Dialing sequence
ETSI DTMF	**0002*1#
ETSI V.23	**0002*2#
Bellcore	**0002*3#

Tip: if you cannot figure out which CLI standard to use, try all three sequences, following each of them by a *Ring Back Test*. The CLI standard whose *Ring Back Test* prints a "1234567890" on your display will be the correct one.

In order to disable the CLI Display functionality and therefore stop viewing calling numbers, dial ****0002*0#** from a DTMF (Pulses) telephone connected to the FCT.

Tip: if you do not want your telephone number to appear at the caller's location, you can dial **#31#** before the phone number you are going to call (**B-number**); in other words, dial **#31#B-Number**.

To find out about the DA20 accessory display, please check *FCT accessories* on page 41.

Using fax machines

The FCT terminal allows the connection of Group 3 analog faxes to the FCT telephone line, in the same way as a telephone.

Warning!: *the fax communication service has to be registered with your network operator. Otherwise, the network will not allow faxes to be sent or received.*

Warning!: *you will not be able to make or receive other calls while a fax communication is established*

Sending a fax

The FCT terminal is programmed to automatically detect outgoing calls made by an analog fax, meaning that the user simply has to use the fax in the same way as a conventional telephone line.

Warning!: *if your fax is an old model and is not able to send the fax identification, CNG tone, you should include *01* before the destination number (B-number) in order to inform the FCT that the next call is a fax call (Example: *01*B-number).*

This is not usually necessary, as most faxes automatically send the CNG tone so that the fax call is made automatically by the FCT.

Receiving a fax

Incoming faxes are received in the same way as using the fixed line.

Note: *if you have a SIM card that does not support separate voice and fax numbers, the FCT does not recognize the type of incoming call. This means that the calling party will have to inform you each time a fax is about to be sent. In this case, dial *9901# to prepare your FCT to receive a fax call.*

Using PCs

Analog modems connected to the FCT telephone line work in the same way as if they were connected to the fixed line. In this way, you can use your PC standard modem to make data calls (Internet browsing, e-mail, etc.) through the FCT line.

To be able to send and receive data calls, you need:

- a PC equipped with an analog modem and the appropriate computer program (Web Browser, E-mail, etc). This is a standard configuration for most PCs in the market.
- a SIM card that supports data transmission over the GSM network.

*Note: if you do not have a modem in your PC, the FCT can be configured to act as a modem itself. This requires the installation of the FCT modem drivers on your PC. For this specific configuration, please refer to the **FCT Data Reference Manual** in “FCT accessories” on page 41.*

The FCT should be pre-configured with the settings from your network operator. For detailed information on FCT data configured settings, please consult your distributor or network operator.

You can choose between two connection methods:

- **GPRS data:** GPRS allows you to be always online as you are not charged for the connection time but for the amount of information that you exchange. You need a SIM card that supports GPRS. Please contact your network operator for charging subscription details.
- **GSM data:** normally, you pay for all the time you are connected. You need a SIM card that supports GSM data.

For fast and efficient access, try the GPRS access type.

GPRS data access type

GPRS data access type allows you to make outgoing calls only, usually to connect to the Internet.

Your GSM network operator provides you with an Internet connection as part of the GPRS service.

Warning!: the GPRS data communication service has to be registered with your network operator. Otherwise, the network will not accept GPRS calls.

If your SIM card supports GPRS, your network operator must supply you with a **user name** and **password** in order to access the GPRS network, and

optionally, to improve the Internet connection, a **DNS address** and a **Proxy address**. All these settings will allow you to configure the Dial-up Networking program in your PC in order to establish a GPRS connection.

Note: this procedure is similar to the way you configure an Internet connection from a specific ISP (Internet Service Provider).

If your network operator has provided you with an installation guide, please follow the instructions included in the guide.

Otherwise, the present manual explains the installation process. As the Dial-up Networking is different for Windows 98 and Windows NT, two separate descriptions are provided. See *ANNEX: PC Data Configurations* on page 43.

If you encounter problems during installation, please contact your distributor or network operator.

GSM data access type

GSM data access type allows you to make both incoming and outgoing data calls in the same way as with a fixed line. Therefore, you can connect to the

Internet using the same ISP (Internet Service Provider) that you would use with a fixed line.

Warning!: *you will not be able to make or receive other calls while a GSM data communication is established.*

The SIM card must support GSM data.

The network operator does not need to supply any specific information, and it is your ISP who provides you with the user name, password and installation information in order to establish an Internet connection.

Please contact your ISP for installation instructions.

Note: your PC should be configured in exactly the same way as if using the fixed line.

Tip: if you already have an Internet connection configured for the fixed line, you do not need to make any changes, just connect your PC to the FCT line instead of the fixed line.

Warning!: *if your modem is an old model and it is not able to send the CNG tone, you should include *02* before the destination number (B-number) in order to indicate the FCT that the call to be made is a data call (Example: *02*B-number). This is not usually necessary, as most modems automatically*

send the CNG tone so that the data call is made automatically by the FCT.

Incoming data calls are received in the same way as using the fixed line.

***Note:** if you have a SIM card that does not support separate voice and data numbers, the FCT does not recognize the type of incoming call. This means that the calling party will have to inform you each time a data call is about to be made. In this case, dial *9902# to prepare your FCT to receive a data call.*

Using PBX

For a PBX connection, first, you should:

- Check that the PBX fulfills the requirements for FCT connectivity. See *Installing an FCT connected to a PBX* on page 10.
- Follow all FCT installation steps specified in *Preparing your FCT* and *Installing the FCT on the wall* on page 13.

Warning!: the PBX may require specific programming; both, programming and installation should be done by specialized service personnel.

If you are using an analog PBX - Disconnect the telephone you have used for testing purposes and connect the cable from the chosen analog trunk of the PBX to the FCT telephone line.

If you are using a 2B+D ISDN digital PBX - Disconnect the telephone you have used for testing purposes and follow the instructions in the FI12 installation guide. See *FCT accessories* on page 41).

If you are using a Least Cost Routing (LCR) programmed PBX, check your PBX programming guide to see how to program your PBX to make

certain calls through the FCT trunk. Once LCR is programmed, make a call to a mobile telephone number. See if the call is established through the FCT and also check the speech quality. Ask the person who answers to call you back to confirm that the installed FCT can receive calls properly.

If the PBX does not offer the LCR option, choose the FCT trunk manually with a specific prefix. Check the installation in the same way as before.

If you encounter problems, please contact your distributor or network operator.

Advanced features

If a DTMF telephone is connected to the FCT, the following features can be accessed.

Changing volume

During a call, you can increase or decrease the reception volume level.

- Increase volume: dial R####
- Decrease volume: dial R****

Diverting calls (call forward)

You can divert incoming calls to another phone number when you are unable to answer.

The following table shows the divert alternatives as well as the way to proceed to manage this function.

Warning!: *these dialing sequences may vary depending on your network operator. If these do not work, please consult your network operator or check the user guide provided with your subscription.*

To manage diversion of calls ...	With Function ...	Dial ...	You will hear...
Always	Activate	**21*Phone_number#	1 beep
	Deactivate	##21#	3 beeps
	Check status	*#21#	1 beep if activated 3 beeps if deactivated
When busy	Activate	**67*Phone_number#	1 beep
	Deactivate	##67#	3 beeps
	Check status	*#67#	1 beep if activated 3 beeps if deactivated
When no answer	Activate	**61*Phone_number#	1 beep
	Deactivate	##61#	3 beeps
	Check status	*#61#	1 beep if activated 3 beeps if deactivated
When out of reach	Activate	**62*Phone_number#	1 beep
	Deactivate	##62#	3 beeps
	Check status	*#62#	1 beep if activated 3 beeps if deactivated
All	Deactivate	##002#	3 beeps

Note: if instead of hearing beeps you hear a deep tone, this means that there has been an error in the activation or deactivation.

Restricting calls (call barring)

You can restrict certain types of calls that can be made or received. You need a **password** to turn a call restriction on or off. Initially, this password will be **0000**.

We recommend you to change it by dialing:

****03**OLD_PASSWORD*NEW_PASSWORD*
NEW_PASSWORD#**

The following table shows the restriction alternatives as well as the way to proceed to manage this function.

***Warning!:** these dialing sequences may vary depending on your network operator. If these do not work, please consult your network operator or check the user guide provided with your subscription.*

To manage restriction of calls ...	With Function ...	Dial ...	You will hear...
All outgoing calls	Activate	*33*Password#	1 beep
	Deactivate	#33*Password#	3 beeps
	Check status	*#33#	1 beep if activated 3 beeps if deactivated
All outgoing international calls	Activate	*331*Password#	1 beep
	Deactivate	#331*Password#	3 beeps
	Check status	*#331#	1 beep if activated 3 beeps if deactivated
All outgoing international calls except your home country	Activate	*332*Password#	1 beep
	Deactivate	#332*Password#	3 beeps
	Check status	*#332#	1 beep if activated 3 beeps if deactivated
All incoming calls	Activate	*35*Password#	1 beep
	Deactivate	#35*Password#	3 beeps
	Check status	*#35#	1 beep if activated 3 beeps if deactivated
All incoming calls when you are abroad	Activate	*351*Password#	1 beep
	Deactivate	#351*Password#	3 beeps
	Check status	*#351#	1 beep if activated 3 beeps if deactivated
All	Deactivate	#330*Password#	3 beeps

Note: if instead of hearing beeps you hear a deep tone, this means that there has been an error in the activation or deactivation.

More than one call (call wait, call hold, call transfer, multiparty call)

You can handle more than one call simultaneously. For example, you can put an ongoing call on hold, while you make or answer a second call, and then switch between the two calls.

You can also set up a conference call to have a joint conversation with up to four people.

Call waiting service

If you wish to be able to receive a second call while another call is in progress, you must turn on the call waiting service.

Note: if you are engaged in a fax or a data call, any other incoming calls are rejected.

Warning!: *these dialing sequences may vary depending on your network operator. If these do not work, please consult your network operator or check the user guide provided with your subscription.*

To manage Call waiting Function...	Dial...	You will hear...
Activate	*43#	1 beep
Deactivate	#43#	3 beeps
Check status	*#43#	1 beep if activated 3 beeps if deactivated

Note: if instead of hearing beeps you hear a deep tone, this means that there has been an error in the activation or deactivation.

Making a second call

You can only put one call on hold while you make a second call.

- To hold the active call: press the **R** key on your telephone and proceed to make the second call.
- To switch between the two calls, press **R2**.
- To finish the active call and return to the held call, press **R1**.

Receiving a second call

If the call waiting service is on, you hear a tone in the telephone when you receive a second call.

- To ignore the waiting call, take no action.
- To continue with the ongoing call and reject the waiting call (give a User Busy indication tone to the waiting call): press **R0**.
- To end the ongoing call and answer the waiting call: press **R1**.

Note: if you hang up the telephone, you will also end the ongoing call and the telephone will ring again so that you can answer the waiting call as a normal call.

- To put the ongoing call on hold and answer the waiting call : press **R2**. You can switch again between both calls by pressing **R2** each time.

Note: if “divert when busy” is on, the waiting call is diverted to the number you have specified.

Conference calls (multiparty)

In a conference call, you can have a joint conversation with up to four other people.

To create a conference call:

- If you are in conversation with call 1, put it on hold (press **R**), and dial call 2.
- To join the two calls into a conference call: press **R3**. Now you have a conference group of three people (call 1, call 2 and yourself).

To add a new call (call 3):

- Put the conference group on hold (press **R**) and dial call 3.
- Join the new call to the conference group: press **R3**. Now you have a conference group of four people (call 1, call 2, call 3 and yourself).

To end the conference call, hang up the telephone.

To release a specific call from the conference group: press **R1X** (where X is the number of order of the call).

To choose one call from the multiparty in order to have a private communication, putting the rest of the conference calls on hold: press **R2X** (where X is the number of order of the call you want to communicate with).

Explicit call transfer

To transfer a call to another B-number:

- Put the ongoing call on hold (press **R**) and dial the B-number.
- Now you can connect this new call, which is ongoing, with the call you have put on hold, but abandon the conversation yourself. To do this, press **R4**.

Phonebook (abbreviated dialing)

You can store telephone numbers in either the SIM card memory or the FCT memory. Up to 99 telephone numbers can be stored in each of them.

The following table shows how to manage the phonebook with the 99 memory positions (Pos).

Warning!: Pos has to have always two digits. For example, memory position number 1 has Pos=01


To manage the phonebook in ...	With Function ...	Dial ...	You will hear...
SIM card memory	Store	**51*Pos*Phone_number#	1 beep
	Delete	#51*Pos#	3 beeps
	Check position	*#51*Pos*Phone_number#	1 beep if memorized 3 beeps if not memorized
	Dial	Pos#	Dialing ...
FCT memory	Store	**51*Pos*Phone_number*1#	1 beep
	Delete	#51*Pos*1#	3 beeps
	Check position	*#51*Pos*Phone_number*1#	1 beep if memorized 3 beeps if not memorized
	Dial	Pos*	Dialing ...

Note: if instead of hearing beeps you hear a deep tone, this means that there has been an error in the activation or deactivation.

Voice mail

The answering service of your network allows callers to leave a voice message when you cannot answer your calls.

If you have voice mail, you will hear 3 beeps before the dial tone, as soon as you pick up the receiver to make a call.

Note: if you have the DA20 display adapter accessory (See “FCT accessories” on page 41), a  icon will show when you have voice mail.

Call your voice mail number in order to receive the voice mail message.

Sending tone signals

During a call, you can press keys 0-9, * and # to perform banking by phone or other interactive services, or control an answering machine.

Controlling call time (minute minder)

If the minute minder is activated, you hear a beep once every minute during a call as a reminder of the duration of the ongoing call.

To manage minute minder function...	Dial...	You will hear...
Activate	**42#	1 beep
Deactivate	#42#	3 beeps
Check status	*#42#	1 beep if activated 3 beeps if deactivated

Note: if instead of hearing beeps you hear a deep tone, this means that there has been an error in the activation or deactivation.

Emergency number (hot line)

With the hot line service, you can program the FCT to automatically dial a number (emergency or another one) within a few seconds (timer) after the telephone receiver is lifted.

To manage the hot line ...		Dial ...	You will hear...
Activate		**53*Phone_number**timer#	1 beep
Deactivate		#53#	3 beeps
Check status for...	service	*#53#	1 beep if activated 3 beeps if deactivated
	service and phone number	*#53*Phone_number#	1 beep if activated 3 beeps if deactivated
	service, phone number and timer	*#53*Phone_number**timer#	1 beep if activated 3 beeps if deactivated

Note: if instead of hearing beeps you hear a deep tone, this means that there has been an error in the activation or deactivation.

Two voice lines (alternate line service)

If your SIM card supports the alternate line service, your FCT has two voice lines with different phone numbers, separate bills and perhaps different subscription services.

With this functionality, you can have only one FCT and telephone for both your personal and work phone, for instance. If necessary, you may switch from one line to the other.

You will receive all the incoming calls addressed to any of your numbers independently of the selected line, but your outgoing calls will be charged to the line you have selected (1 or 2).

Warning!: *these dialing sequences may vary depending on your network operator. If these do not work, please consult your network operator or check the user guide provided with your subscription.*

To manage alternate line service function ...	Dial ...	You will hear...
Activate Line 1	**591#	1 beep
Activate Line 2	**592#	1 beep
Check status Line 1	*#591#	1 beep if activated 3 beeps if deactivated
Check status Line 2	*#592#	1 beep if activated 3 beeps if deactivated

Note: if instead of hearing beeps you hear a deep tone, this means that there has been an error in the activation or deactivation.

SIM card security

To manage your SIM card

Most SIM cards are locked at the time of purchase. If the SIM card lock is on, you have to enter your PIN (Personal Identity Number) the first time you use your FCT. See *Enter PIN* on page 11.

Note: once you have entered the PIN code for the first time you will not have to enter it again unless

you change your SIM card. The FCT performs this operation automatically in case of power failure.

If you enter your PIN incorrectly three times in a row, the SIM card will be blocked.

Note: if you have the DA20 display adapter accessory display (See “FCT accessories” on page 41), an “ENTER PUK” message will show on your display indicating that your SIM card is blocked.

To unblock your SIM card

To unblock your SIM card, you need to enter your PUK (Personal Unblocking Key), which is supplied by your network operator.

The procedure to enter the PUK is exactly the same as for entering the PIN.

Note: if you enter the wrong PUK ten times in a row, your card will be permanently blocked. If this happens, you should contact your network operator.

To change your PIN

You can change the PIN in the SIM card by dialing from the fixed line telephone connected to the FCT the following sequence:

****04*OLD_PIN*NEW_PIN*NEW_PIN#**

To unblock your SIM card while changing your PIN

In order to unblock your SIM card and change the PIN at the same time, please dial the following sequence:

****05*PUK*NEW_PIN*NEW_PIN#**

Troubleshooting and FCT indicators

This chapter describes the procedures to identify and, if possible, correct problems that might occur with the FCT or its installation. Some problems require that you call your network operator, but most problems you encounter you can easily correct yourself.

Light indicators

The FCT has two light indicators: red and green.

The green light indicates the network signal strength, according to the following table:

Number of green light flashes	Network signal strength
0	Unacceptable (no networks)
1 - - -	Acceptable
2 - - - - -	Good
3 - - - - - - -	Very good
Steady -----	Excellent

Note: if you have the DA20 accessory display (See “FCT accessories” on page 41), a “NO NETWORKS” message will show on your display when no network is available. If another network to which your SIM card is locked is available, the message “EMERGENCY ONLY” will appear instead, indicating that you will be able to make emergency calls only.

The red light indicates the FCT power supply situation:

Red light	Power supply situation
ON-----	FCT power supply is on
Flashing- - -	FCT is powered from battery back-up
OFF	FCT power is off (FCT switched off)

When both red and green lights are **flashing simultaneously**, it means that the FCT is under **alarm conditions**. In this situation, **ONLY EMERGENCY CALLS** can be made.

Depending on the number of flashes, the table shows the type of alarms that may be happening.

Note: if you have the DA20 accessory display (See “FCT accessories” on page 41), the specific alarm status message will show on your display.

Simultaneous flashing	Alarm status	Do this ...
1 flash synchronized Red - - - - - Green - - - - -	ENTER PIN	Insert the correct PIN. See <i>Enter PIN</i> on page 11.
	ENTER PUK	Insert the correct PUK. See <i>Enter PUK</i> on page 11.
	INSERT SIM	Insert the SIM card in the FCT.
	SIM ERROR	The SIM is failing. Check the SIM or contact your network operator.
	WRONG NETWORK WRONG SUBNETWORK	The FCT is SIM-locked to a specific network and the inserted SIM card does not correspond to this network. Check the SIM or contact your network operator.
	WRONG SIM	The FCT is PIN-locked and can only be used with one SIM card. Introduce the original SIM or contact your network operator.
2 flashes synchronized Red - - - - - Green - - - - -	FCT LOCKED	The FCT lock function is enabled. Contact your distributor or network operator.
	WRONG <u>XXX</u> CK (where <u>XXX</u> is the name of the specific password)	The FCT is blocked due to wrong security password introduction. Contact your distributor or network operator.
3 flashes synchronized Red - - - - - Green - - - - -	FCT FAILURE	Check connections of the FCT or contact your distributor or network operator.
		Pick up your telephone in order to end the ring-back test.

The following table summarizes the different operating status of your FCT depending on the light indicators, and what to do if a problem is encountered.

If the problem persists, please contact your distributor or network operator.

Light indicators status		
If you see...	It means...	Do this...
Red light ON Green light ON or flashing	<ul style="list-style-type: none"> AC power is ON The FCT is connected to cellular network and available for use Normal operation mode	<ul style="list-style-type: none"> Start using your FCT. If Green light is flashing, see <i>FCT location</i> on page 13. If you are unable to make a call, check the telephone cable connection or the PBX connections and program.
Both lights OFF	<ul style="list-style-type: none"> AC Power is OFF 	<ul style="list-style-type: none"> Verify that the AC power plug is securely connected to the AC power outlet. Check that the DC power cord is connected to the FCT. Check the circuit breaker or fuse for the AC electrical circuit that supplies power to the AC outlet in the FCT power supply.
Red light ON Green light OFF	<ul style="list-style-type: none"> AC Power is ON The FCT is not connected to the cellular network and is not available for use 	<ul style="list-style-type: none"> Verify that the antenna is properly installed. Verify you have installed the FCT in the best location (see <i>FCT location</i> on page 13).
Red light Flashing Green light ON or flashing (not simultaneously)	<ul style="list-style-type: none"> AC power is OFF. The FCT is operating using the battery back-up power The FCT is connected to the cellular network and available for use 	<ul style="list-style-type: none"> Verify that the AC power cords is securely connected to the AC power outlet. Check that the DC power cords is connected to the FCT. Check the circuit breaker or fuse for the AC electrical circuit that supplies power to the AC outlet in the FCT power supply. If green light is flashing, see <i>FCT location</i> on page 13.
Red light Flashing Green light Flashing (simultaneously)	<ul style="list-style-type: none"> Alarm status The FCT is blocked or it has an internal fault 	<ul style="list-style-type: none"> Check the alarm status table above Contact your distributor or network operator for assistance.

Audible tones

The FCT generates audible tones in your telephone set, thus providing the same service characteristics as the one given by the traditional fixed network.

The following table describes the nature of the main tones you will get when using the unit. Other standard call progress tones, such as busy tone, number obtainable or ring back tone, are provided directly by the network.

Note: *some tones can vary depending on your network operator.*

Tone	Name	Nature	It means...
1	Dial	Regular tone when picking up the phone	The phone is in service and you can start your call.
2	Special dial	Intermittent long-cadenced tone when picking up the phone	The phone is in service and you can start your call, but you have some subscriber service (call forward, barring or hot line) activated.
3	No service	Intermittent short-cadenced tone when picking up the phone	No service available. Check <i>Light indicators</i> on page 8.
4	Howler	Loud and acute tone	You have left the handset lifted for too long without any call in progress.
5	Minute minder	One beep every minute while in conversation	It informs you about how long the call is being in progress.
6	Voice Mail alert	When picking up the phone, three beeps and then regular dial tone	You have a voice mail in your voice mailbox. You need to call your mailbox to retrieve it. See <i>Voice mail</i> on page 31.
7	Positive	One beep	Subscriber service successfully activate or positive indication when interrogation.
8	Negative	Three beeps	Negative indication when interrogation.
9	Error	One deep tone	Subscriber service not activated or programming procedure not successfully performed.

FCT technical data

GSM AIR INTERFACE

Frequency Bands: Triple-Band E-GSM 900, GSM 1800 and GSM 1900

E-GSM 900

Frequencies: TX 880-915 MHz, RX 925-960 MHz
RF power: Maximum 2 W (33 dBm),
Power class 4

GSM1800

Frequencies: TX 1710-1785 MHz,
RX 1805-1880 MHz
RF power: Maximum 1 W (30 dBm),
Power class 1

GSM1900

Frequencies: TX 1850-1910 MHz,
RX 1930-1990 MHz
RF power: Maximum 1 W (30 dBm),
Power class 1

Data capabilities: multislots GPRS Class B and HSCSD (Data rates depend on GSM operator services)

Speech codecs: Full Rate, Enhanced Full Rate and Half Rate

FCT INTERFACES

- Telephones: RJ11 (a/b 2-wire line); fixed telephone interface
- RS232 port: DB-9 Serial COM interface
- GSM antenna: SMA plug- female (50 W)
- SIM card: Small plug-in card, 3V or 5V type
- Input Vdc: 7.5 Vdc; 0.8 A (connector: EIAJ RC-5320A class 4, male)

TELEPHONE INTERFACES

- Telephones: Speech
- Analog Fax: Group 3 Fax transmission
- Analog Data: V.90, V.34, V.32bis, V.32, V.22bis, V.22, V.23, V.21, Bell 212A & 103
- CLI: ETSI DTMF and V.23; Bellcore FSK
- Line Impedance: 600 ohm (default)
- Loop Current: 25 mA (off-hook)
- Open loop voltage: 48 V (on-hook)
- Loop resistance: < 650 ohm (off-hook)
- Ringing voltage: 45 Vrms
- Ring Load: 3 REN; up to 3 telephone devices
- Call Control signaling: polarity reversal and loop-break

RS232 INTERFACE

- Data services: all applicable GSM 7.07 AT commands
- SMS: all applicable GSM 7.05 AT commands

ANTENNA (included)

- Frequency Bands: Triple-Band E-GSM 900, GSM 1800 and GSM 1900
- Characteristics: omnidirectional

POWER SUPPLY (included)

- AC Input: 100 - 240 Vac; 47 - 63 Hz 3 pole AC inlet connector (IEC 320 power inlet)
- Available plugs: EU, UK, USA, and AU

ENVIRONMENTAL

- Operating Temperature: -10°C to +55°C
- Operating Humidity: 20 – 75 %
- Storage Temperature: -40°C to +85°C
- Storage Humidity: 5 - 95%

PRODUCT PRESENTATION

Basic Kit: F251m Business, power supply, mains cable, wall-mount bracket, internal antenna, user guide.

FCT Size: Height 148 mm, Width 165 mm, Depth 45 mm.

FCT Weight: 300 grams.

FCT accessories

The F200 series terminals benefit from a wide range of accessories, which ensure the best and easiest way to install, serve and maintain the terminals, enhancing their functionality.

Only these approved-by-Ericsson accessories will guarantee the quality and performance of the terminals.

ISDN Adapter FI12

The FI12 Adapter has been specifically designed to provide a direct interface between the FCT telephone line (F250m, F251m, F2412m and F271m models) and a PBX with basic access (BA), 2B+D ISDN trunk lines. The FI12 Adapter behaves in the same way as an ISDN Network Termination in a point-to-point configuration and provides two analog speech channels, each of which is linked to an FCT via the analog trunk.

FI12 Specifications:

- Protocol layers: ISDN-BA S/T Europe DSS1 interface via RJ45 socket according to protocol layers 1, 2 and 3.
- S/T interface: only works in point-to-point configuration (FI12-PBX).

- S/T interface feeding voltage: not provided by the adapter.
- Speech calls: 2 simultaneous speech calls availability.
- FI12 interfaces: 2 analog ports for FCT connection // 1RJ45 connector for PBX connection // 1RS232 port for configuration and maintenance purposes // 7.5 VDC, EIAJ Standard rc-5320 CLASS 4 power connector.
- Reset button.
- One red LED indicating AC power.
- Two green LEDs indicating calls in progress and the channel in use.
- Environmental range: -10°C to +55°C; RH 85% at +50°C.

FI12 features:

- CLIP (Call Line Identification Protocol).
- FI12 Size: Height 132 mm, width 99 mm, depth 34 mm
- FI12 Weight: 208 grams

Accessory display DA20

The FCT display -DA20- is easy to install: simply plug it in into the telephone line in the most suitable place and you will benefit from the following features:

- FCT phone line direct feeding
- FCT real-time status indication: operator's name, radio signal...
- Calling Line Identification (CLI)
- List of incoming calls
- SMS received display and storage (Very useful functionality for pre-paid subscribers)

Antennas

In areas where coverage is poor, the following accessory antenna can be used to enhance the FCT performance:

- **External triple band omnidirectional antenna.** For installation or in places where indoor coverage is unstable. Band: triple 900/1800/1900 MHz. Gain: 2dBi. Cable: 3m. Connector: SMA male.
- **Outdoor directional antenna.** The directional antenna is intended to be wall mounted by means of a bracket. It provides with the maximum gain among the whole range of antennas for the FCT. Band: 900 MHz. Gain: 10dBi. Cable: 7.5 m. Connector: SMA male.

Power supply

The FCT offers different optional alternatives for back up systems:

- **Rechargeable lead-acid batteries:** 6V, 1.2-1.3Ah with 2.5 hours-continuous conversation, 10 hours stand-by.
- **Alkaline AA batteries.** In order to adjust 6 alkaline batteries sized AA inside the terminal, an accessory **AA batteries holder** (size: 99.01mm X 51.69mm) is provided.
- **DC/DC power adapter:** it is provided in order to use the DC voltage (car battery, solar cell, etc.) to feed the FCT. DC input: 12-24 VDC.

Due to the standard nature of these batteries, they are not supplied by Ericsson.

No NiMH or NiCd rechargeable batteries are allowed.

Warning!: *Ericsson recommends precaution when handling lead-acid batteries and also special attention over storage and power loss issues. See **Safe and Efficient Use on page 51.***

FCT Data Reference Manual

This is a data Reference Manual intended for advanced users of data communications. It explains how to take advantage of the FCT as a modem through the RS232 port, in order to make HSCSD and GPRS data calls, PC fax calls and sending/receiving SMS.

Annex: PC data configurations

Windows 98 GPRS set-up

Warning!: your PC must have the *Dial-up Networking* and the *TCP/IP* protocol installed within the network components. You can check this in 'Start->Settings->Control Panel' and double clicking on 'Network'. If not, these components have to be previously added from your Windows installation disk.

To configure your GPRS connection under Windows 98 in your PC, follow steps 1 to 9:

- 1) Go to 'My Computer' and double-click 'Dial-Up Networking'.
- 2) Double-click on 'Make New Connection' so that the wizard starts. Type a name for the connection and select the installed analog modem from your computer, then click on 'Next'.



- 3) In the 'Telephone number:' field enter: ***98#**, then click 'Next'.



4) Click on 'Finish'.



5) In the 'Dial-Up Networking' folder, right-click on the created connection and select 'Properties'.



6) In the 'General' tab, **turn off** 'Use area code and Dialing Properties'.



7) In the 'Server Types' tab:

- 'Type of Dial-Up Server': select 'PPP: Internet, Windows NT, Windows 98' from the list.
- Check that 'Advanced options' and 'Allowed network protocols' are filled in as shown below:



- 8) Push the 'TCP/IP Settings...' button.
- 'Server assigned IP address' must be **checked**.
 - 'Server assigned name server addresses' must be set if the network operator requires it. If the network operator provides **DNS addresses**, then these must be added once 'Specify name server addresses' is marked. (Example shown in figure

below with primary and secondary DNS addresses provided by operator being 111.111.111.111 and 222.222.222.222)

- 'Use IP header compression' optional.
- 'Use default gateway on remote network' **turned on**.



- 9) Click 'OK' all the way to update the configuration.

You have now installed the GPRS connection. To connect to the GPRS network, follow steps 1 to 3:

- 1) Go to 'My Computer' -> 'Dial-Up Networking' and open the previously configured connection.
- 2) Type the **user name** and **password** provided by your network operator and verify that the telephone number is ***98#**. Then press 'Connect'.



- 3) Once you are connected, you may use your connection as an ordinary Internet connection.



***Note:** if your network operator has provided you with a Proxy Address, you should configure your Web browser (Internet Explorer, Netscape, etc.) accordingly.*

Windows NT GPRS set-up

***Warning!:** your PC must have the Remote Access Service and the TCP/IP protocol installed within the network components. You can check this in 'Start->Settings->Control Panel' and double clicking on 'Network'. If not, these components have to be previously added from your Windows installation disk.*

To configure your GPRS connection under a Windows NT PC, follow steps 1 to 8:

- 1) Go to 'My Computer' and double-click 'Dial-Up Networking'.
- 2) If there are no previously configured connections, the following wizard will show up. Type a name for the connection and tick 'I know all about phonebook entries and would rather edit the properties directly'. Then click on 'Finish'; edit properties of this new connection and go to step 4) to continue with the configuration.



- 3) Instead of the wizard window, the following window might come up. In this case, push 'New...' button.



- 4) Within the 'Basic' tab, type a name for the connection in the 'Entry name' field. In the 'Dial using' field select the analog modem already installed on your PC.

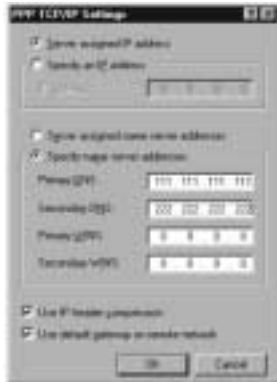


- 5) In the 'Server' tab select 'PPP: Windows NT, Windows 95 Plus, Internet' from the 'Dial-up server type' list. Be sure that 'TCP/IP' is the only ticked protocol within the 'Network protocols' box.

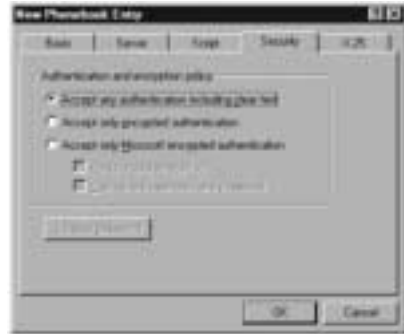


- 6) Push the 'TCP/IP Settings...' button.
- 'Server assigned IP address' must be **checked**.
 - 'Server assigned name server addresses' must be set if network operator requires it. If the network operator provides **DNS addresses**, then these must be added once 'Specify name server addresses' is marked. (Example shown in figure below with primary and secondary DNS addresses provided by operator being 111.111.111.111 and 222.222.222.222)

- 'Use IP header compression' optional.
- 'Use default gateway on remote network' **turned on**.



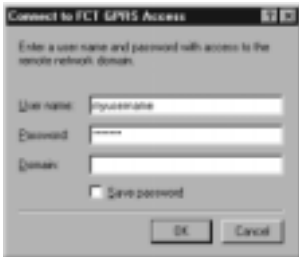
- 7) Press 'OK' and go to the 'Security' tab. Select 'Accept any authentication including clear text'.



- 8) Click 'OK' all the way to update the configuration. You have now installed the GPRS connection. To connect to the GPRS network, follow steps 1 to 3:
 - 1) Go to 'My Computer -> Dial-Up Networking' and select the Dial-Up Networking connection previously configured. Verify that the telephone number is *98#. Then press 'Dial'.

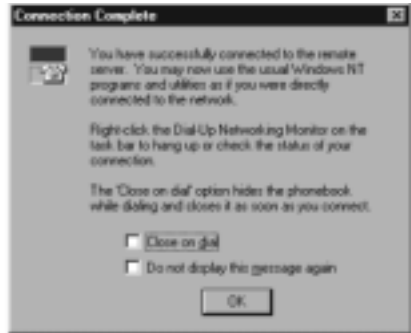


- 2) Type the **user name** and **password** provided by your network operator. If a 'Domain' field is present, then leave it blank.



- 3) Once you are connected, you may use your connection as an ordinary Internet connection.

***Note:** if your network operator has provided you with a Proxy Address, you should configure your Web browser (Internet Explorer, Netscape, etc.) accordingly.*



Safe and efficient use

Note: please read this information before using your FCT.

Save this user guide since it contains important safety information and operating instructions.

Product care

- Do not expose your FCT to liquid or moisture.
- Do not expose your FCT to extreme high or low temperatures.
- Do not expose your FCT to lit candles, cigarettes, or cigars, or to open flames etc.
- Do not attempt to disassemble your FCT. A broken warranty seal will void the warranty. The product does not contain consumer serviceable components. Only Ericsson Service Points or Certified Service Centres should perform service.
- Do not use any accessories other than Ericsson originals with the exception of products approved by Bluetooth Qualification Review Board. Use of non-Ericsson original accessories may result in loss of performance, damage to the product, fire, electric

shock or injury. The warranty does not cover product failures that have been caused by use of non-Ericsson original accessories.

- Treat your product with care. Keep it in a clean and dust-free place.

Antenna care

- Use only an antenna that has been specifically designed for your FCT. Use of unauthorized antennas, modifications, or attachments could damage the FCT and may violate the appropriate regulations, causing loss of performance and radio frequency (RF) energy above the recommended limits.
- Do not hold or touch the antenna when the FCT is in use. Holding or touching the antenna affects call quality.
- Do not use the FCT if the antenna or antenna cable is damaged or missing.
- Do not place the telephone cord or the power supply cord on or near the FCT antenna or antenna cable.
- Do not cover or place an obstruction on or around the antenna.

Radio frequency energy

Your FCT is a radio transmitter and receiver. When the FCT is turned on, it receives and transmits radio frequency (RF) energy. The system that handles your call when you are using your FCT controls the power level at which your FCT transmits.

All Ericsson terminals are designed to not exceed the limits for exposure to RF energy set by national authorities and international health agencies.

SAR (Specific Absorption Rate) measurements are usually performed for products that are normally used at the ear. As the FCT is not to be used close to the human body, as it is at least 20 cm apart from the telephone device (See installation instructions), SAR measurements are not applicable to the FCT.

Electronic devices

Most modern electronic equipment, for example equipment in hospitals and cars, is shielded from RF energy. However, certain electronic equipment is not, and so Radio Frequency (RF) energy from the FCT terminal may affect some electronic equipment, therefore:

- Do not use your FCT near medical equipment without requesting permission.
- Do not use your FCT in airplanes.
- Pacemaker patients should be aware that the use of an FCT very close to a pacemaker might cause the device to malfunction.
- Some hearing aids might be disturbed if placed very near the FCT.

Multiple electrical devices connected to the AC power outlet that is used by the FCT terminal may generate excessive interference to the FCT terminal.

Potentially explosive atmospheres

Do not use the FCT near a gas leak. Use a telephone away from the area of the suspected gas leak to immediately report it.

Turn off the FCT in areas with a potentially explosive atmosphere, for example: gas stations, below deck on boats, fuels or chemical transfer or storage facilities, and areas where the air contains chemical or particles, such as grain, dust or metal powders. It is rare, but your FCT or its accessories could generate sparks. Do not transport or store flammable gas, liquid or explosives in the areas where the FCT is installed.

Power supply

- Ensure that your AC power outlet is adequately grounded.
- Connect the power supply cord only to the AC power outlet that meet the specifications marked on the FCT power supply.
- Never alter the AC power cord or plug. If necessary have the correct outlet installed by a qualified electrician or call your service provider for assistance.
- To reduce risk of damage to the electric cord, remove it from the outlet by holding onto the AC adapter rather than the cord.
- Make sure the cord is positioned so that it will not be stepped on, tripped over or otherwise subjected to damage or stress.

Children

DO NOT ALLOW CHILDREN TO PLAY WITH YOUR FCT SINCE IT CONTAINS SMALL PARTS THAT COULD BECOME DETACHED AND CREATE A CHOKING HAZARD.

Disposing of the product

The product should never be placed in municipal waste. Please check local regulations for disposal of electronic products.

Battery information

If you use the battery back-up function of the FCT, please take into account the following information:

Lead Battery

- Before installing the battery in its compartment, be sure to connect the battery cable properly: do not connect the positive terminal of the battery cable to the negative terminal on the battery.
- Make sure to connect the FCT power supply first, before you connect the battery to the FCT.
- The FCT will automatically recharge the lead battery
- The first time the battery is used, it is recommended that you charge it for 3 hours if you intend to power the FCT from the battery only.

A rechargeable battery has a long service life if treated properly.

Warning!: *when a battery is not installed or is connected to an FCT that is switched off, it should be recharged during 24 hours every 6 months.*

- Do not expose the battery to extreme temperatures, never above +60°C. For maximum battery capacity, use the battery in room temperature.
- Do not let the metal contacts on the battery touch another metal object. This could short-circuit and damage the battery.
- Do not expose the battery to open flames. This could cause the battery to explode.
- Do not expose the battery to liquid.
- Do not allow the battery to be put into the mouth. Battery electrolytes may be toxic if swallowed.
- Do not puncture or burn the battery. The battery contains corrosive liquids and materials.
- If the battery leaks and the liquid inside spills on the skin or clothing, immediately wash it off with plenty of clean water. If the liquid splashes into eyes, immediately flush the eyes with plenty of clean water and consult a doctor.

AA batteries

- Use only AA-1.5V alkaline batteries with the FCT battery holder accessory. See “*FCT accessories*” on page 41.

- If you use rechargeable AA batteries, these will need to be recharged using an external charger, never in the FCT.

Disposing of the battery

The battery should never be placed in municipal waste. Please check local regulations for disposal of batteries.

Moving or storing the FCT

Turn off the FCT by disconnecting the power supply as well as the battery (if it is installed).

If you are transporting the FCT on an aircraft, you will be asked to remove the battery from the unit. For updated information about the transportation and use of wireless communication equipment, contact the appropriate local and national regulatory agency or your service provider.

Accessing the battery compartment



This label appears under the battery compartment indicating that the FCT should always be **switched off** before attempting to access the battery compartment.

Limited Warranty

Limited warranty conditions

Thank you for purchasing this Ericsson Product. To get the maximum use out of your new product, we recommend that you follow a few simple steps:

- Read the Guidelines for safe and efficient use.
- Read all of the terms and conditions of the Ericsson Warranty listed below.
- Save your original receipt, which is necessary for warranty repair claims. Should your Ericsson Product need warranty service, you should return it to the dealer from whom it was purchased or contact your local Ericsson helpdesk for further information.

Ericsson Warranty

Ericsson warrants this Product to be free from defects in material and workmanship at the time of its original purchase by a customer, and for a subsequent period of one (1) year.

All accessories for the Product are covered by a warranty period of one (1) year from the date of original purchase by a customer.

What Ericsson will do

If, during the warranty period, this Product fails to operate under normal use and service, due to improper materials or workmanship, Ericsson subsidiaries, authorized distributors, or authorized service partners will, at their own option, either repair or replace the Product in accordance with the terms and conditions stipulated herein.

For efficiency purposes, Customers are reminded that should their Ericsson Product need warranty service, they return it to the dealer from which it was purchased or call their local Ericsson helpdesk for further information on warranty claims.

Conditions

1. The warranty given herein is only valid if the original receipt issued by the dealer to the original purchaser, specifying the date of purchase and serial number, is presented along with the Product to be repaired or replaced. Warranty service may be refused if this information is not available or has been removed or changed after the original purchaser of the Product from the dealer.

2. Any repair or replaced Product will be warranted for the remainder of the original warranty period. Repair or replacement may be via functionally equivalent reconditioned units. Replaced faulty parts or components will become the property of Ericsson.
3. This warranty does not cover any failure of the Product due to normal wear and tear, misuse, including but not limited to use in other than a normal and customary manner, in accordance with Ericsson's instructions for use and maintenance of the Product, accident, modification or adjustment, acts of God, improper ventilation, or damage resulting from liquid.
4. This warranty does not cover product failures due to repair installations, modifications or improper service performed by a non-Ericsson authorized service workshop, opening of the Product by a non-Ericsson authorized person or use of non-Ericsson original accessories.
5. Batteries are not covered by this warranty.
6. Tampering with any of the seals on the Product will void this warranty.

7. THERE ARE NO OTHER EXPRESS WARRANTIES, WHETHER WRITTEN OR ORAL, OTHER THAN THIS PRINTED LIMITED WARRANTY. ALL IMPLIED WARRANTIES, INCLUDING WITHOUT LIMITATION IMPLIED WARRANTIES OF MERCHANTABILITY OR FITNESS FOR A PARTICULAR PURPOSE, ARE LIMITED TO THE DURATION OF THIS LIMITED WARRANTY. IN NO EVENT WILL ERICSSON BE LIABLE FOR LOSS OF PROFITS, COMMERCIAL LOSS, INCIDENTAL OR CONSEQUENTIAL DAMAGES OF ANY NATURE, TO THE FULL EXTENT THOSE DAMAGES CAN BE DISCLAIMED BY LAW.

Some countries do not allow for the exclusion or limitation of loss of profits, commercial loss, incidental or consequential damages, or limitation of the duration of implied warranties, so the preceding limitations or exclusions may not be applicable in certain cases. This warranty gives specific legal rights, and depending on the country, other rights may be available as well.

Regulatory information

CE0682

Declaration of Conformity

We, **Ericsson Radio Systems AB** of
Kistagången 26, Kista
S-16480 Stockholm, Sweden

declare under our sole responsibility that our product
Ericsson type 0130101-BV

and in combination with our accessories, to which this declaration relates is in conformity with the appropriate standards 3GPP TS 51.010-1, EN 301 489-7 and EN 60950, following the provisions of, Radio Equipment and Telecommunication Equipment directive **99/5/EC** with requirements covering EMC directive **89/336/EEC**, and Low voltage directive **73/23/EEC**.

Kista December 15, 2001

Place & date of issue



Staffan Svensson, Vice President Special Products

We fulfil the requirements of the R&TTE Directive (**99/5/EC**).

FCC Statement

Before a phone is available for sale to the public, it must be tested and certified to the FCC that it does not exceed the limit established by the government-adopted requirement for safe exposure.

Nevertheless, for mobile devices where the radiating structure is located more than 20 cm away from the user and the EIRP (radiating power) is lower than 3 Watts for transmitting frequencies higher than 1.5 GHz, SAR (Specific Absorption Rate) measurements are not required.

This device complies with Part 15 of the FCC rules. Operation is subject to the following two conditions: (1) This device may not cause harmful interference, and (2) This device must accept any interference received, including interference that may cause undesired operation.



Definitions

The following definitions are supplied in order to better understand certain concepts included in this manual:

Switch-on: power up the FCT by connecting the AC power supply or a charged battery.

Switch-off: power down the FCT by disconnecting the AC power supply or removing the battery.

Fixed Line Devices: any analog devices that can be connected to the analog fixed line:

- Fixed Telephones- ordinary telephones for the fixed line.
- G3 Faxes- ordinary fax machines available on the market.
- CLI devices- ordinary displays or telephones equipped with displays that show the caller number for incoming calls.
- V.90 modems- standard modems for PCs used to make data connections (Internet) over the ordinary fixed line.

Telephone Line: this is the line provided by the FCT (RJ11 connector) that behaves in the same way as the ordinary fixed line.

Telephone Line Wiring: this is the cable layout that has to be available in order to distribute telephone lines within a house or office.

GPRS: General Packed Radio Service. This is a technology for data communications that is ideal for e-mail or Internet access as it provides a high speed “always online” connection. This means that, although you are always attached to the network, you only pay for the amount of data that you really transmit.

PBX: Public Branch Exchange. It is a telephone system within an enterprise that switches calls between enterprise users on local lines while allowing all users to share a certain number of external phone lines.

PIN: Personal Identity Number. This is the number you get from your network operator and which you need to access the network. It will prevent the SIM card to be used by unauthorized people.

PUK: Personal Unblocking Key. This is the number you get from your network operator and which is used to unblock your SIM card if an incorrect PIN has been entered three times in a row.

SIM card: this is the card provided by your network operator that you need to insert in your GSM terminal in order to make and receive calls. It contains all the information from your subscription characteristics.



Visit us on our web site:
<http://www.ericsson.com/wireless/products/fixed>

www.westlake.co.uk
0800 298 8011

Ericsson España, S. A.
Bilbao Technology Centre
Parque Tecnológico, 700
E-48160 Derio - Spain
EN/LZT 123 6904 R1B